



Connecticut Association of Boards of Education
 81 Wolcott Hill Road, Wethersfield, CT 06109
 Telephone: 800-317-0033 or 860-571-7446 • Fax 860-571-7452
 Email: admin@cabe.org

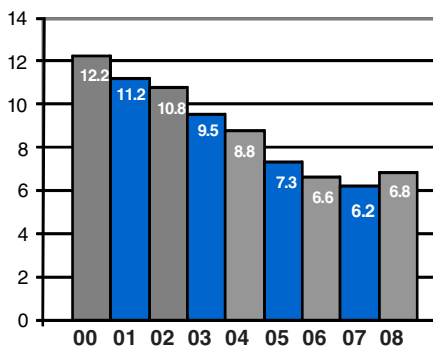
What YOU need to know about Connecticut Public Schools

Connecticut:

4th in the nation in SAT participation

Tied for 5th in 4th Grade Reading on NAEP

High School Dropout Rate



Cumulative Dropout Rates by Grade %
 Source: Connecticut State Department of Education

SATs – 2009

- 26,217 (81%) of eligible public school students took the test, ranking Connecticut **fourth in the nation** in SAT participation. The national rate of participation was 42%.
- Average reading score stayed the same - 503
- Average math score up one point - 508
- Average writing score stayed the same - 506
- Average reading score (male) down two points - 504
- Average reading score (female) up two points - 502
- Average math score (male) down two points - 524
- Average math score (female) up two points - 493
- Average writing score (male) down three points - 497
- Average writing score (female) up one point - 513

CT Average Composite SAT Score by Racial/Ethnic Group for Public School Students

Year	Black	Asian	Hispanic	White
2009	1220	1631	1313	1587
2008	1215	1598	1321	1583
2007	1237	1597	1312	1570
2006	1238	1615	1328	1575

CAPT

Connecticut Academic Performance Test – 2009

Students At or Above Goal on the Content Areas of Mathematics, Science, Reading and Writing

Note: Includes non-public schools. The numbers are not “cumulative” thus, for example, students who are at or above goal in all four areas are not counted in any of the other areas.

Tested	None of Areas
44,231	14,368 33.7%

Only One Area	Only Two Areas
5,673 13.3%	5,298 12.4%

Only Three Areas	All Four Areas
5,350 12.6%	11,925 28%

Percent of Public School Students At or Above State Goal

Mathematics	48.0
Science	43.0
Reading	47.5
Writing	55.1

Connecticut Mastery Test

Percentage At or Above State Goal – 2009

Grade	Reading	Writing	Math	Science
3	54.6	62.6	63.0	
4	60.7	64.2	63.8	
5	66.0	66.6	69.0	58.3
6	69.0	62.2	69.0	
7	74.9	62.9	66.3	
8	68.5	66.5	64.7	60.9

Connecticut Vital Signs

- In 2006-07, Connecticut had a 14.7 to 1 **pupil/teacher** ratio and the national average ratio was 15.5.
- Connecticut ranked 1st in the nation in 2007 in **per capita income**.
- Education Revenue by Source for 2007-08

Local	52.9%
State	41.7%
Federal	5.0%

AP

- More Connecticut students are taking AP exams and earning college credit. 10,933 students from the public high school class of 2008 took at least one AP exam. 7,908 of those students earned a 3 or higher on at least on AP exam.

National Assessment of Educational Progress

	Grade	State Avg.	National Avg.
Mathematics - 2007	4	243	239
	8	282	280
Reading - 2007	4	227	220
	8	267	261
Science - 2005	4	155	149
	8	152	147
Writing - 2007	8	172	154

latest available results.

CABE recognizes that Connecticut public schools still face many challenges. We must still work together to achieve higher student achievement by all students. However, on the issue of whether our schools are meeting the needs of our students and the people of Connecticut, CABE believes the answer is “YES”!

Sources: Connecticut State Department of Education; 2009 Education Vital Signs, a publication of The American School Boards Journal; and The College Board. All are based on latest results available.