

~~-2004~~



Successes in Connecticut's Public Schools

Connecticut: Continued Success in Education

SAT Participation (second in the nation)

More Students Taking A.P. Courses

**Tied for 1st in 4th Grade Reading
on NAEP**

SATs

- Connecticut's SAT scores indicate sustained increases in the state average for math and verbal scores. Over 32,771 (84%) of eligible students took the test, ranking Connecticut **second in the nation** in SAT participation. This is an increase of 1,400 students from last year. The national rate of participation was only 48%. This indicates more students aspiring to attend college. Results since last year:
- Average verbal score up three points – (512)
- Average math score up five points – (514)
- Average verbal score (male) up eight points
- Average verbal score (female) down two points
- Average math score (male) up seven points
- Average math score (female) up two points
- The SAT I Reasoning Test results from 2002 to 2003 show a slight (1%) decrease in interest in education as a career.

Connecticut Average Total SAT Score by Racial/Ethnic Group

Year	Black	Asian	Hispanic	White
2003	835	1075	882	1058
2002	824	1082	877	1050
2001	836	1069	890	1054

PSATs

- Connecticut's PSAT/NMSQT verbal score out-performed the nation 48.8 to 48.0. This test, which was taken by 28,356 of Connecticut's high school juniors, is a good predictor of future SAT test results. Students who took the PSAT had an average SAT score of 998 compared to a score of 914 for those students who didn't take the PSAT.
- The math score in Connecticut fell just below the national average 49.0 to 49.2.

AP

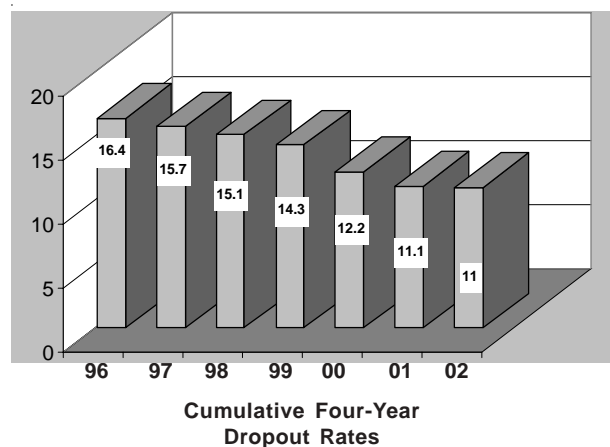
- More Connecticut students are taking AP exams and earning college credit. The number of Connecticut public school AP candidates increased 6.6% to 11,736 – more than 700 over last year. The percent of Connecticut public school students passing AP exams decreased slightly from 72.3% to 71.8%. The national average decreased also from 61.4% to 59.8%.

Connecticut Mastery Test

Percentage At or Above State Goal – 2002

Grade	Reading	Writing	Mathematics
4	55.9	61.5	60.4
6	64.1	60.8	61.1
8	68.1	60.0	56.1

High School Dropout Rate



Other Connecticut Facts

CAPT

Connecticut Academic Performance Test Students at or Above Goal on the Content Areas of Mathematics, Science, Reading and Writing

Note: The numbers are not “cumulative” thus, for example, students who are at or above goal in all four areas are not counted in any of the other areas.

Tested	None of Areas
38,602	13,783 35.7%
Only One Area	Only Two Areas
4,941 12.8%	4,858 12.6%
Only Three Areas	All Four Areas
4,762 12.3%	10,258 26.6%

Percent of Students At or Above State Goal

Mathematics	45.1
Science	43.2
Reading Across the Disciplines	47.0
Writing Across the Disciplines	52.8

NAEP

- 2003 Reading – Connecticut tied for 1st in 4th grade; Connecticut second in 8th grade
- 2003 Math – Connecticut in top ten in 4th grade; Connecticut in top seven in 8th grade

Students per Computer

	1991-92	2000-01	2001-02
Elementary	17.8	5.3	4.8
Middle/Jr. High	12.0	4.4	4.2
High School	9.0	4.1	3.8

Average Class Size

	1998-99	1999-00	2000-01
Kindergarten	18.6	18.5	18.1
Grade 2	20.1	19.8	19.5
Grade 5	21.5	21.8	21.7
Grade 7*	21.7	21.9	21.9
High School**	19.9	20.0	20.0

*English, Math, Social Studies, Science

**Algebra I, Biology, English, American History

Connecticut Vital Signs

- In a comparison of the funding for lowest poverty districts and highest poverty districts, Connecticut has the smallest gap – \$6 – of all states reporting.
- State share of local education budgets down from 40.7% to 39.5%.
- The 2002-03 unaudited Federal share of special education costs shows an increase to 6.00% from 4.72% in 2000-01.
- In 2002-2003, Connecticut ranked 7th in the nation in **pupil/teacher** ratios at 13.2.
- Connecticut ranked 1st in the nation in 2002 in **per capita income**.

Public School Choice in Connecticut

- 16 Charter Schools
- 31 Interdistrict Magnet Schools
- 17 Regional Vocational-Technical High Schools
- 19 Vocational-Agriculture Centers
- 1540 Students in Project Choice (2001-02)

Average Hours of Instruction Per Year

	1999-00	2000-01	2001-02
Elementary	977	979	982
Middle/Jr. High	1,005	1,007	1,009
High School	995	999	998

Activities of Graduates

	Percentage of Graduates			
	1992	2000	2001	2002
Education				
4-Year College	52.1	59.5	59.5	58.9
2-Year College	16.9	15.8	16.9	17.9
Other Education	5.1	3.1	2.8	2.9
Work Force				
Military	3.4	2.8	2.9	2.8
Civilian Employment	16.0	14.8	14.3	13.5
Unemployed	2.3	0.7	.07	.9
Other	4.2	3.3	3.0	3.0

Sources: Connecticut State Department of Education; 2004 Education Vital Signs, a publication of The American School Boards Journal; and Education Week, The College Board, Education Trust and Education Daily. All are based on latest results available.

2/24/04

CABE recognizes that Connecticut public schools still face many challenges. We must still work together to achieve higher student achievement by all students. However, on the issue of whether our schools are meeting the needs of our students and the people of Connecticut, we believe the answer is plainly “YES”!