

-2003-



Successes in Connecticut's Public Schools

Connecticut: Continued Success in Education

SAT Participation (first in the nation)

Public School Choice Increased

More Students Taking A.P. Courses

SATs

- Connecticut's SAT scores indicate sustained increases in the state average for math and verbal scores. Over 31,399 (83.8%) of eligible students took the test, ranking Connecticut **first in the nation** in SAT participation. This is an increase of 1,500 students from last year. The national rate of participation was only 46%. This indicates more students aspiring to attend college.
- Average verbal score unchanged – (509)
- Average math score down one point – (509)
- Average verbal score (male) down four points
- Average verbal score (female) up four points
- Average math score (male) down two points
- Average math score (female) up one point
- The SAT I Reasoning Test results from 1992 to 2002 show an increased interest in education as a career.

Connecticut Average Total SAT Score by Racial/Ethnic Group

Year	Black	Asian	Hispanic	White
2002	824	1082	877	1050
2001	836	1069	890	1054

PSATs

- Connecticut's PSAT/NMSQT verbal score out-performed the nation 48.8 to 48.0. This test, which was taken by 28,324 of Connecticut's high school juniors, is a good predictor of future SAT test results. Students who took the PSAT had an average SAT score of 996 compared to a score of 905 for those students who didn't take the PSAT.
- The math score in Connecticut fell just below the national average 49.0 to 49.2.

AP

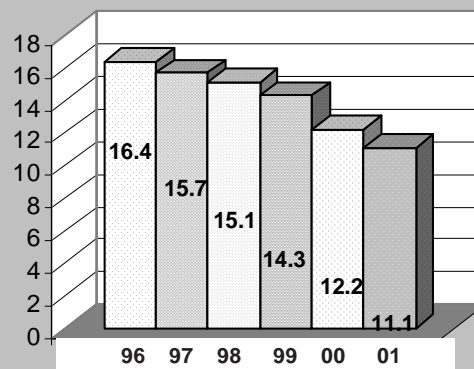
- More Connecticut students are taking AP exams and earning college credit. The number of Connecticut public school AP candidates increased 10.3% to 11,011 – more than 1,000 over last year. The percent of Connecticut public school students passing AP exams increased slightly from 70.3% to 72.3%. The national average is 61.4%.

Connecticut Mastery Test

Percentage At or Above State Goal – 2002

Grade	Reading	Writing	Mathematics
4	55.9	61.5	60.4
6	64.1	60.8	61.1
8	68.1	60.0	56.1

High School Dropout Rate



Cumulative Four-Year Drop-out Rates

Other Connecticut Facts

CAPT

Connecticut Academic Performance Test Students at or Above Goal on the Content Areas of Mathematics, Science, Reading and Writing

Note: The numbers are not "cumulative" thus, for example, students who are at or above goal in all four areas are not counted in any of the other areas.

Tested 37,096	None of Areas 13,400 36.1%
Only One Area 5,095 13.7%	Only Two Areas 5,092 13.7%
Only Three Areas 4,715 12.7%	All Four Areas 8,794 23.7%

Percentage of Students At or Above State Goal

Mathematics	44.6
Science	43.4
Reading Across the Disciplines	42.2
Writing Across the Disciplines	48.7

NAEP

- Connecticut ranked **third in the nation** in 4th grade math on the 2000 National Assessment of Education Progress (NAEP) assessment.
- Connecticut 8th graders are **ranked third in the nation** in math.

Students per Computer

	1991-92	1999-00	2000-01
Elementary	17.8	5.8	5.3
Middle/Jr. High	12.0	4.8	4.4
High School	9.0	4.2	4.1

Average Class Size

	1998-99	1999-00	2000-01
Kindergarten	18.6	18.5	18.1
Grade 2	20.1	19.8	19.5
Grade 5	21.5	21.8	21.7
Grade 7*	21.7	21.9	21.9
High School**	19.9	20.0	20.0

*English, Math, Social Studies, Science

**Algebra I, Biology, English, American History

Connecticut Vital Signs

- In a comparison of the funding for lowest poverty districts and highest poverty districts, Connecticut has the smallest gap – \$6 of all states reporting.
- State share of local education budgets down from 43.3% to 40.6%.
- The 2001-02 unaudited special education costs shows an increase to 5.02% from 4.02% in 1999-2000.
- In 2001-2002, Connecticut ranked 9th in the nation in *pupil/teacher* ratios at 13.8.
- Connecticut ranked 1st in the nation in 2001 in *per capita income*.

Public School Choice in Connecticut

- 13 Charter Schools by September 2003
- 31 Interdistrict Magnet Schools
- 18 Regional Vocational-Technical High Schools
- 19 Vocational-Agriculture Centers
- 1500 Students in Project Choice

Average Hours of Instruction Per Year

	1991-92	1999-00	2000-01
Elementary	967	977	979
Middle/Jr. High	969	1,005	1,007
High School	970	995	999

Activities of Graduates

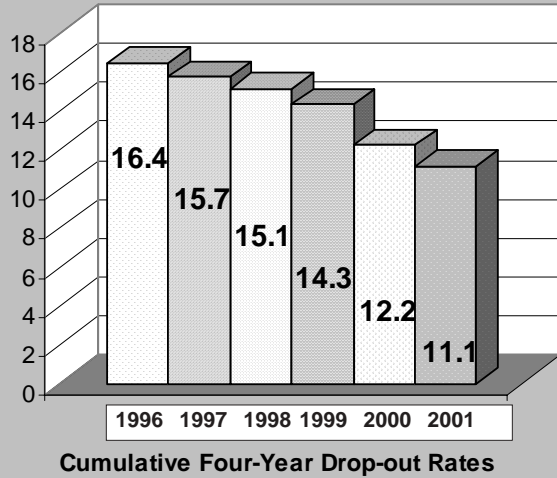
	Number of Graduates	Percentage of Graduates		
	2001	1992	2000	2001
Education				
4-Year College	18,070	52.1	59.5	59.5
2-Year College	5,122	16.9	15.8	16.9
Other Education	844	5.1	3.1	2.8
Work Force				
Military	866	3.4	2.8	2.9
Civilian Employment	4,338	16.0	14.8	14.3
Unemployed	223	2.3	0.7	.07
Other	925	4.2	3.3	3.0
Total	30,388	100	100	100

Sources: Connecticut State Department of Education; 2003 Education Vital Signs, a publication of The American School Boards Journal; and Education Week, The College Board, Education Trust and Education Daily.

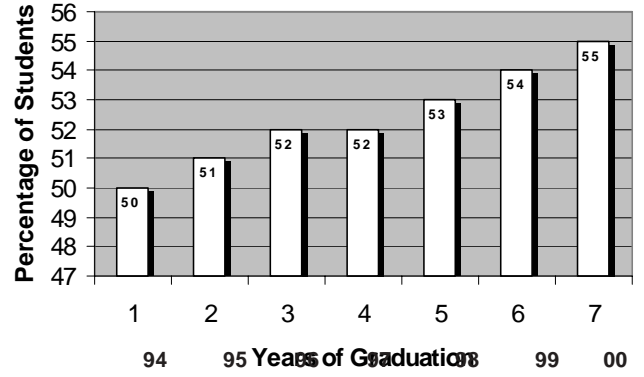
2-20-03

CABE recognizes that Connecticut public schools still face many challenges. We must still work together to achieve higher student achievement of all students. However, in debates on whether our schools are meeting the needs of our students and the people of Connecticut, we believe the answer is plainly "YES"!

High School Dropout Rate

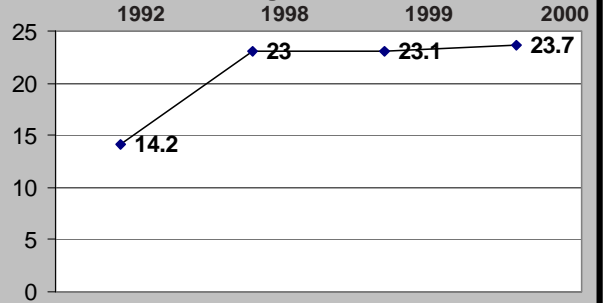


High School Graduates Completing Three or More Years of a Foreign Language



There is no state graduation requirement in foreign language.

**Courses for 2- or 4-Year College Credit
Percentage of Graduates**



High School Dropout Rate

(Cumulative Four-Year Rate)

