



The Montville (CT) Public Schools

invite you to consider joining us as
SUPERINTENDENT OF SCHOOLS

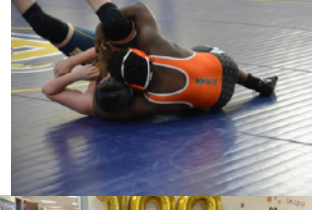


Effective July 1, 2024

Desired Qualities & Qualifications

The Montville Board of Education seeks a leader who will...

- ◆ Communicate effectively
- ◆ Foster trusting relationships
- ◆ Be visionary and think strategically
- ◆ Build the next generation
- ◆ Promote opportunities for all students
- ◆ Encourage professional growth and opportunity
- ◆ Serve as a team player who includes others in decisions
- ◆ Respect decisions team members make
- ◆ Lead with empathy
- ◆ Have a strong backbone
- ◆ Serve as a mentor
- ◆ Develop and manage the budget and insist on fiscal transparency
- ◆ Understand organizational structure
- ◆ Listen actively
- ◆ Be dedicated and loyal to Montville
- ◆ Possess or be eligible for CT 093 certification



Application Process

The Montville Board of Education has engaged the services of the Connecticut Association of Boards of Education (CABE) Search Services to conduct its search for qualified candidates. Please submit materials by **March 28, 2024**.

- ◆ A cover letter indicating interest in the position
- ◆ A CABE Search Services application (cabe.org, services, search services, application)
- ◆ A current resume
- ◆ A minimum of three recent letters of professional reference
- ◆ Undergraduate and graduate transcripts
- ◆ A copy of professional certification (093)

To ensure full consideration and confidentiality, all materials should be emailed to Dr. Mary Broderick at mbroderick.cabesearch@cabe.org



Montville, CT

Situated on more than 45 beautiful square miles along the Thames River, the Town of Montville, CT is close to major cities, highways, and world-class resort casinos, Montville residents enjoy an ideal location with all the benefits of a small community, including an excellent education system. And with global connections, a skilled workforce, and plenty of room to develop, our local businesses thrive.

Originally, Montville, along with Groton and Waterford, was a part of New London. Settled in 1646 under the name of Pequot, New London changed its name in 1658. Montville, including part of what is now known as Salem, was called the North Parish of New London, becoming Montville and being incorporated as a town in 1786.

Montville Schools at a Glance

Our Vision:

At Montville Public Schools all students will be engaged in purposeful and challenging learning experiences that are responsive to individual differences. As a community we share accountability for student success and social and emotional well-being. Through strong relationships with students, parents and the community, we will promote civic responsibility, development of personal identity, and respect for diversity. By providing an environment where it is safe to take risks, students will learn to take pride in who they are and what they accomplish. The Montville Public Schools will deliver on the promise of high achievement for all students and eliminate opportunity gaps to ensure every graduate is a critical, creative, and collaborative problem-solver ready for life, learning and work in a global society.

Board of Education Goal:

Montville graduates will possess the skills and dispositions to navigate complex tasks. Our graduates are communicators, information consumers, problem solvers, and independent learners. They exhibit empathy, perseverance, inclusivity and self-awareness.

The Board of Education is committed to promoting district-wide coherence around three over-arching goals:

Focus on Wellness

Focus on Deep Learning of Key Skills and Dispositions

Focus on Relationships and Psychological and Physical Safety.

Our Schools: 2,310 students

- * PRE-SCHOOL PROGRAM (PK, 66 students)
- * MOHEGAN SCHOOL (PK-GR. 5, 311 students)
- * DR. CHARLES E. MURPHY SCHOOL (K-GR. 5 291 students)
- * OAKDALE SCHOOL (K-GR. 5, 365 students)
- * LEONARD J. TY MIDDLE SCHOOL (GR. 6-8, 581 students)
- * MONTVILLE HIGH SCHOOL (GR. 9-12, 499 students)
- * PALMER ACADEMY (GR. 9-12, 31 students)
- * Transition, & outpaced (28 students)
- * Magnet School placements: (138 students)



Contact Dr. Mary Broderick at

860.608.1763 or email

mbroderick.cabesearch@cabe.org

The Montville Board of Education is in compliance with regulations of Title VII of the Civil Rights Act 1964, Title IX of the Education Amendments of 1972 as amended, and Section 504 of the Rehabilitation Act of 1973, the Civil Rights Act of 1987 and the American with Disabilities Act through its Equal Employment Opportunity and Equal Education Opportunity Policies.